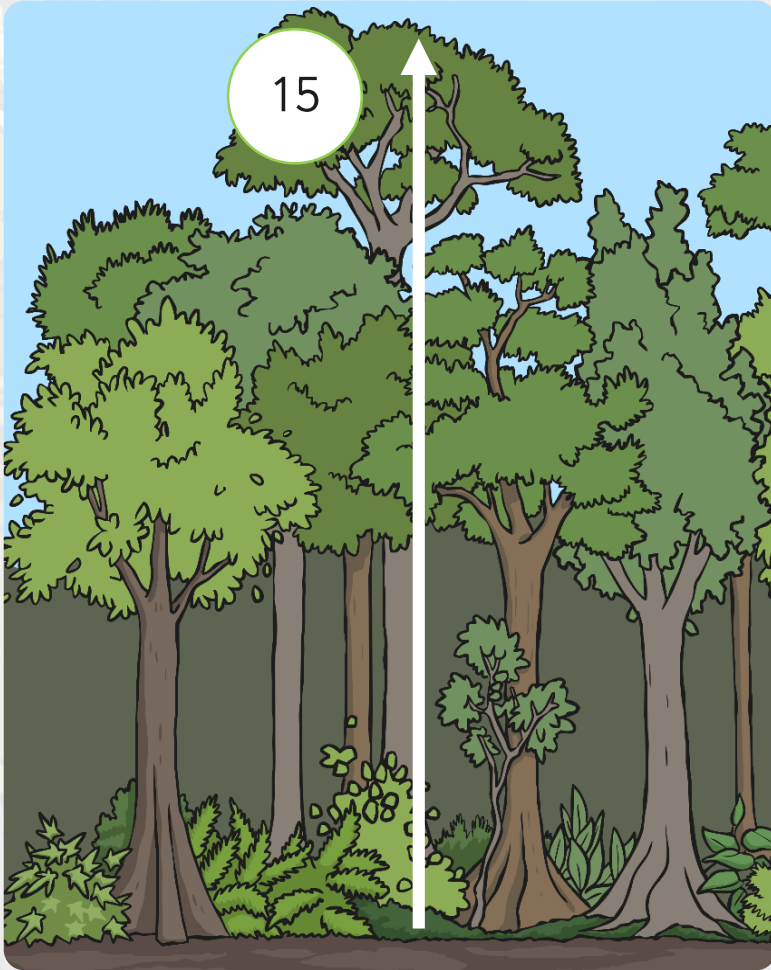


Jungle Measuring



Measuring a Tree



When we are looking at the tree, we can talk about how **tall** it is.

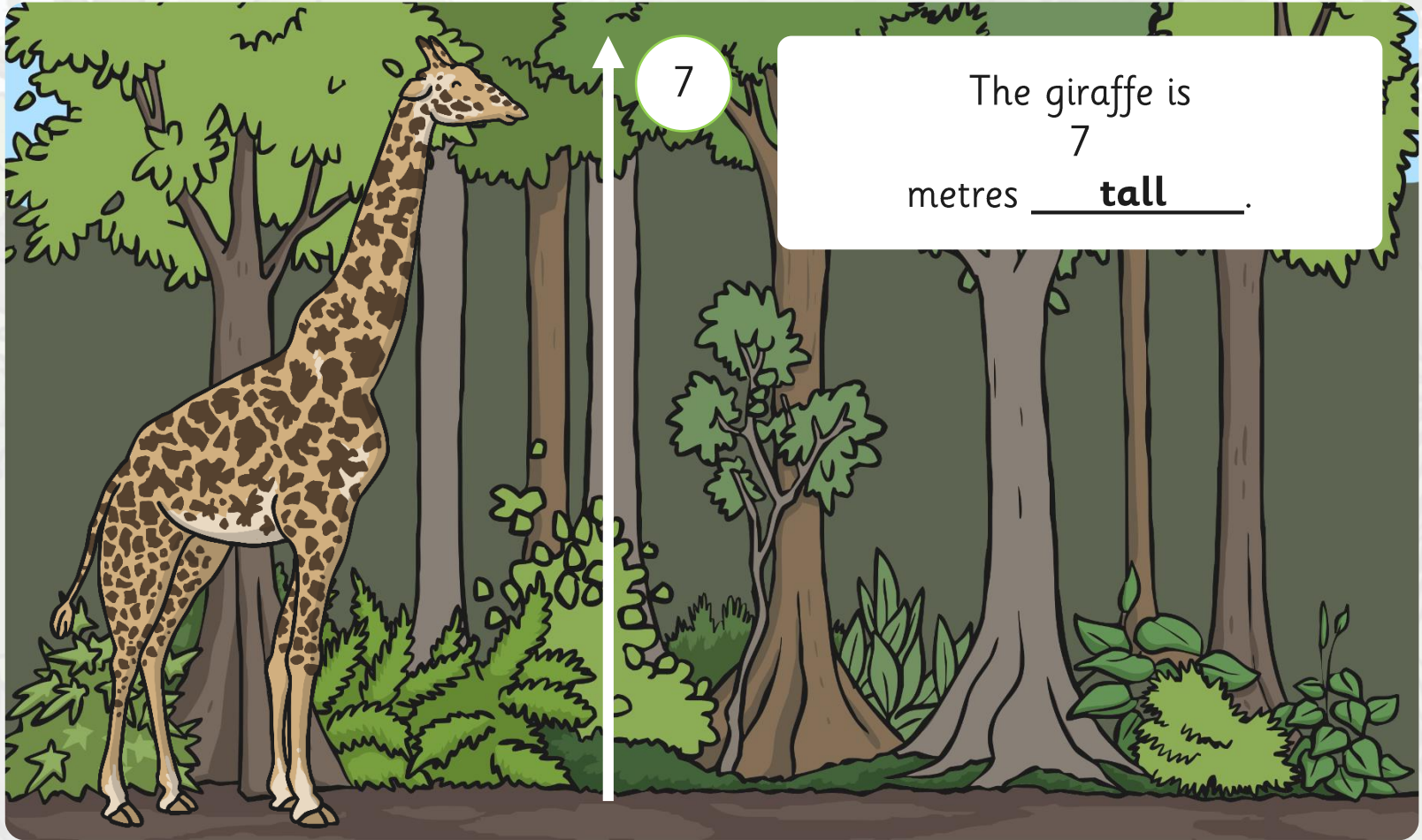
The tree is
15
metres **tall**.

Measuring a Tree



The tree is
12
metres **tall**.

Measuring a Giraffe



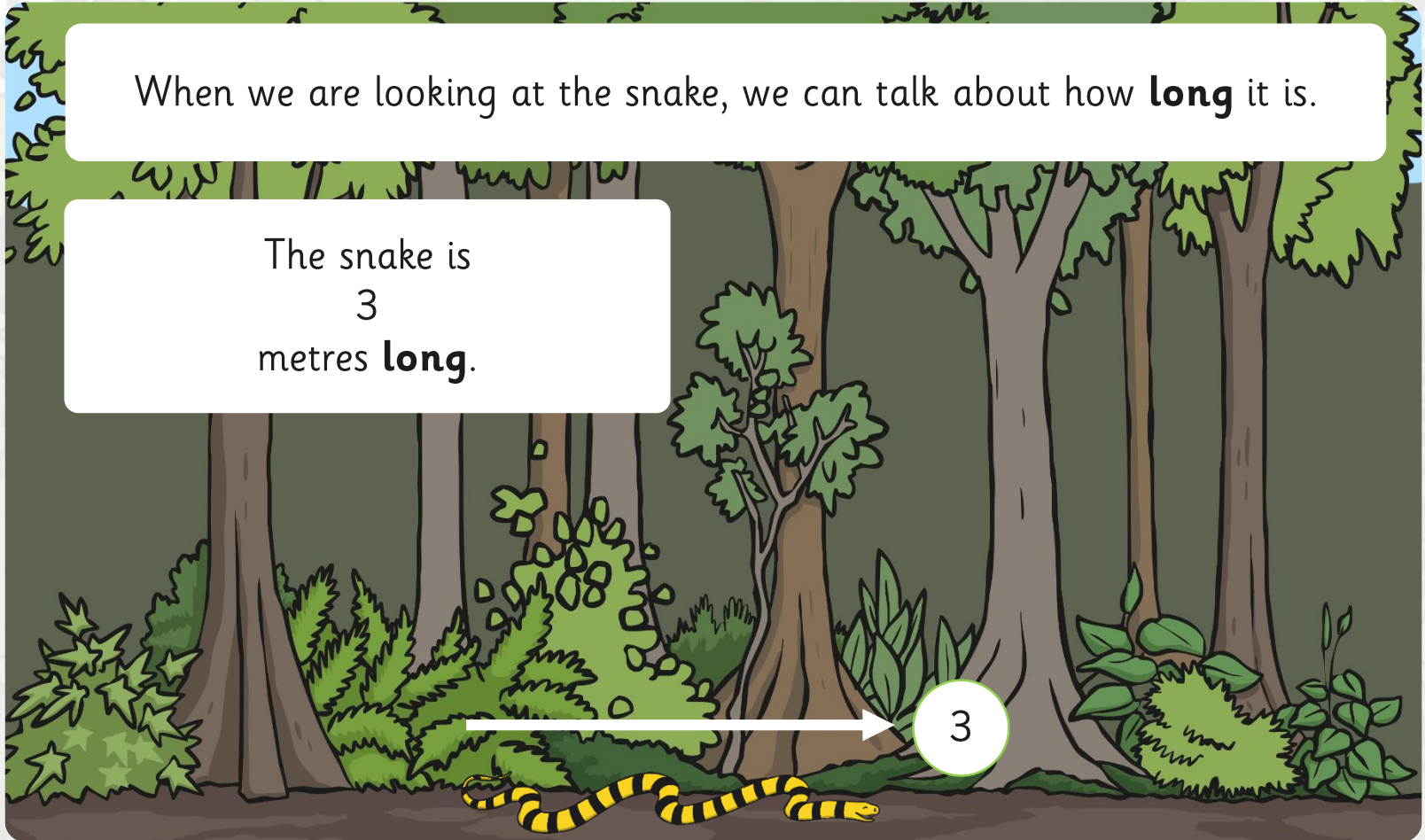
7

The giraffe is
7
metres **tall**.

Measuring a Snake

When we are looking at the snake, we can talk about how **long** it is.

The snake is
3
metres **long**.



Measuring a Snake

The snake is
6
metres **long**.



6

Measuring Height



If something is up in a tree or on a roof, it is up **high**.

If it is on the ground, it is down **low**.

Measuring Height



The monkey is up **high**.

The leopard is down **low**.

Measuring Height

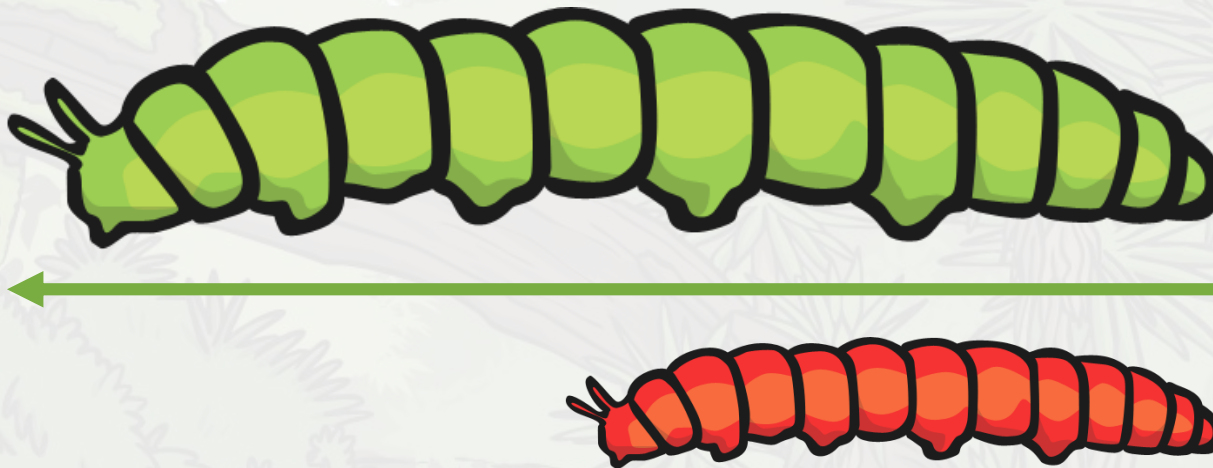


The parrot is up high.

The tiger is down low.

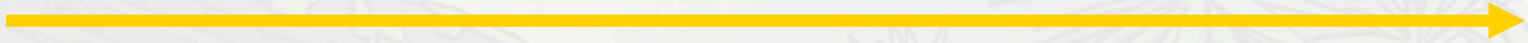
Measuring Length

If we have two things, we can compare them based on how long or short they are.



The green caterpillar is **longer** than the red caterpillar.
The red caterpillar is **shorter** than the green caterpillar.

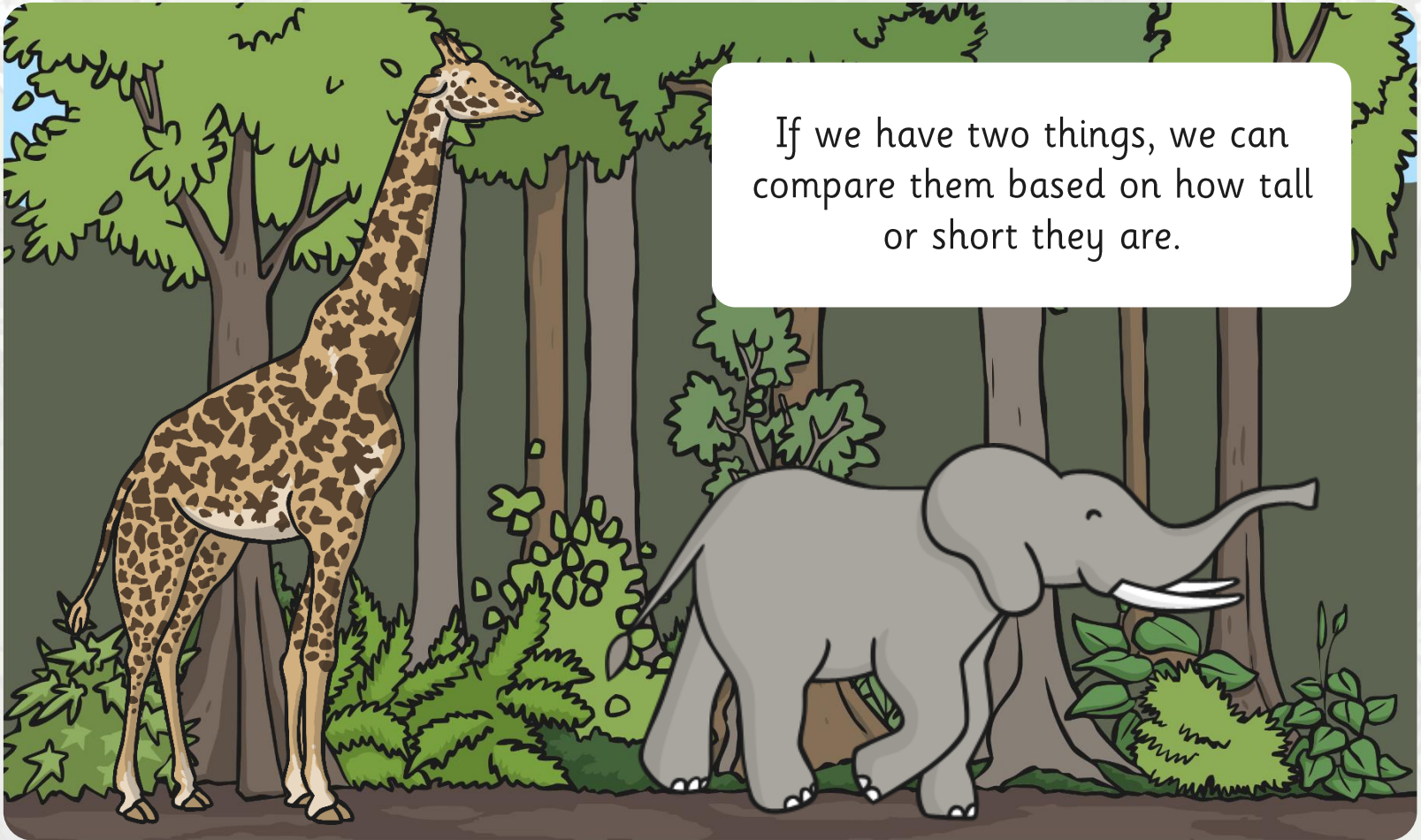
Measuring Length



The yellow snake is longer than the blue snake.

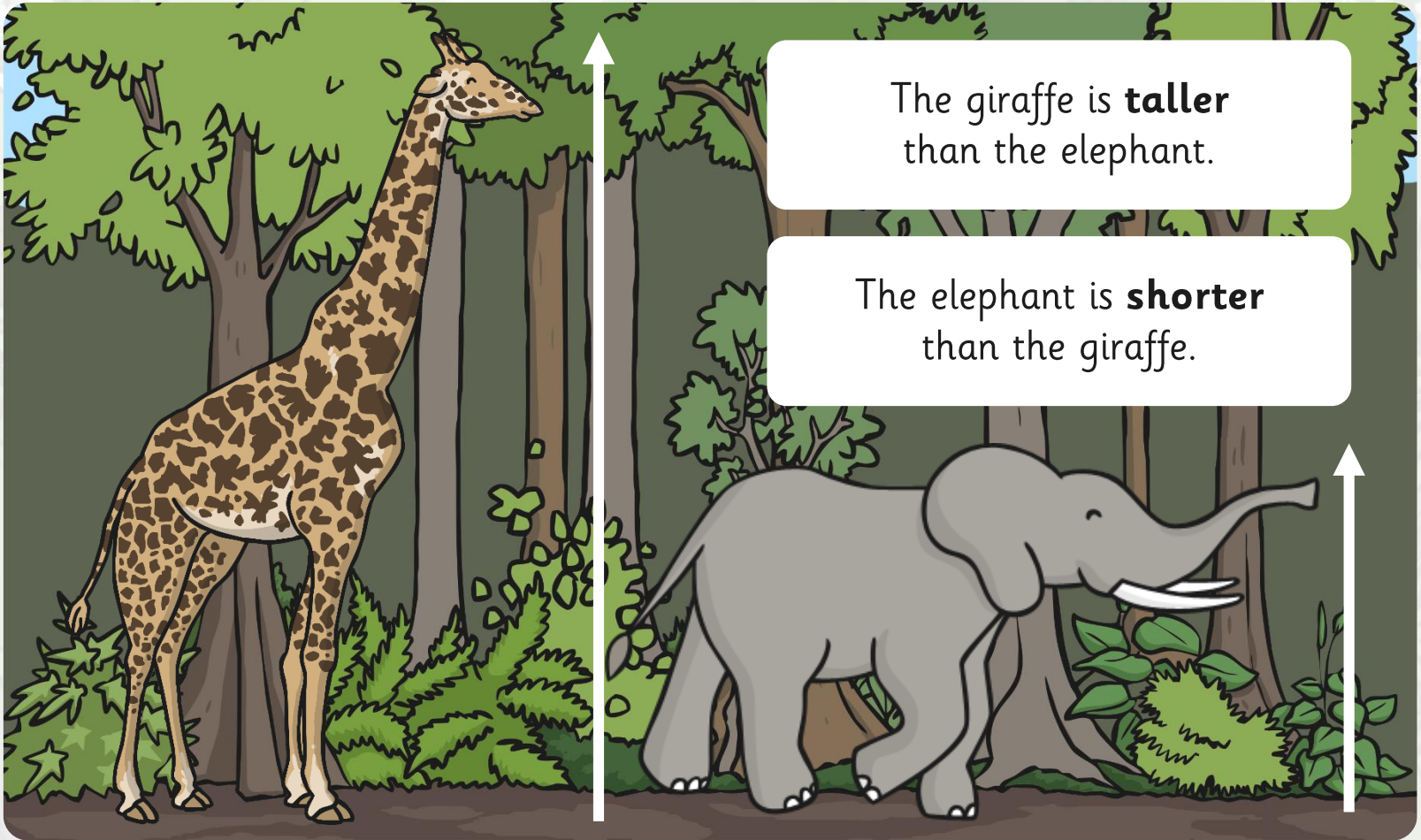
The blue snake is shorter than the yellow snake.

Measuring Height



If we have two things, we can compare them based on how tall or short they are.

Measuring Height



The giraffe is **taller** than the elephant.

The elephant is **shorter** than the giraffe.

Measuring Height

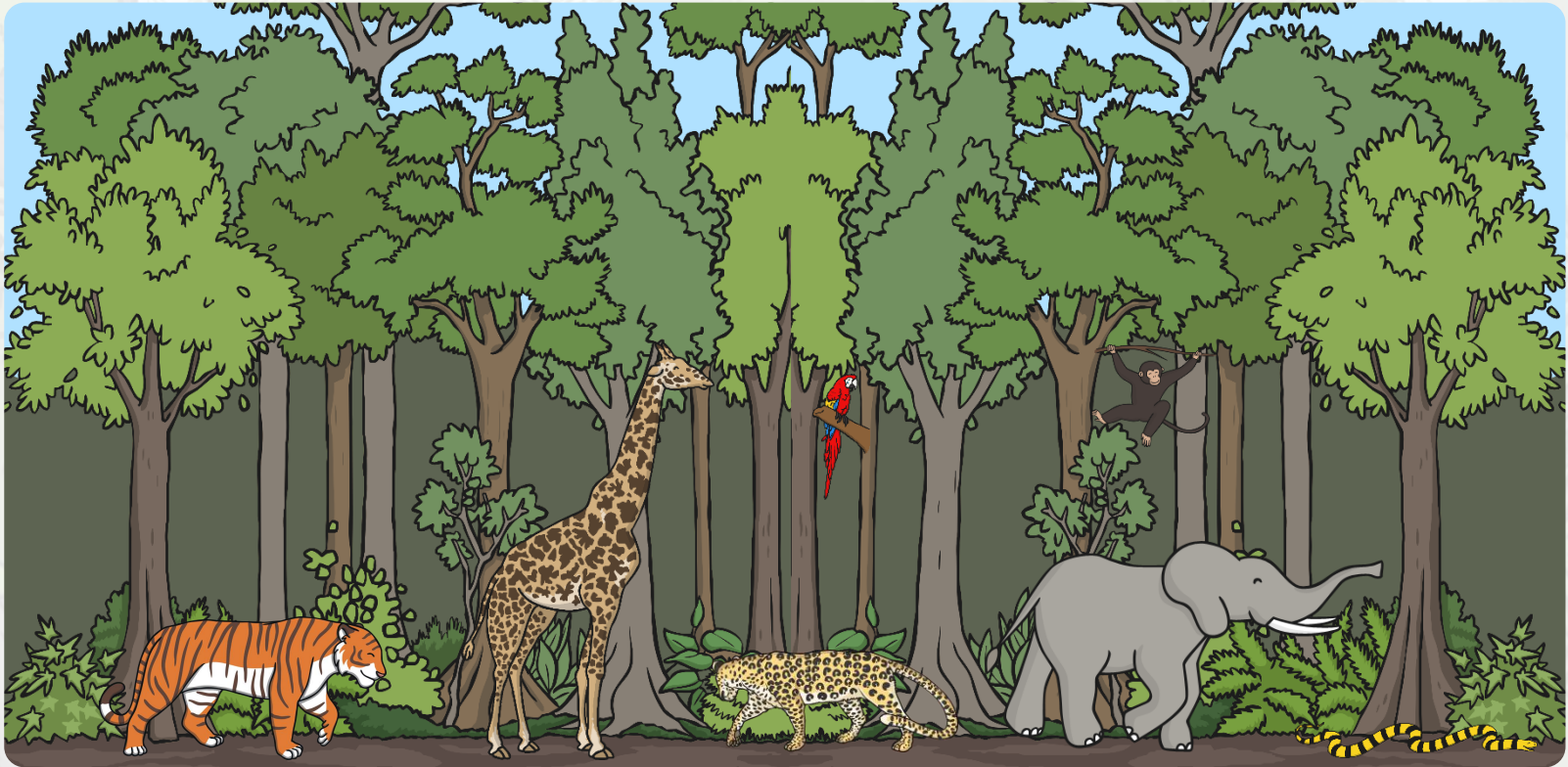


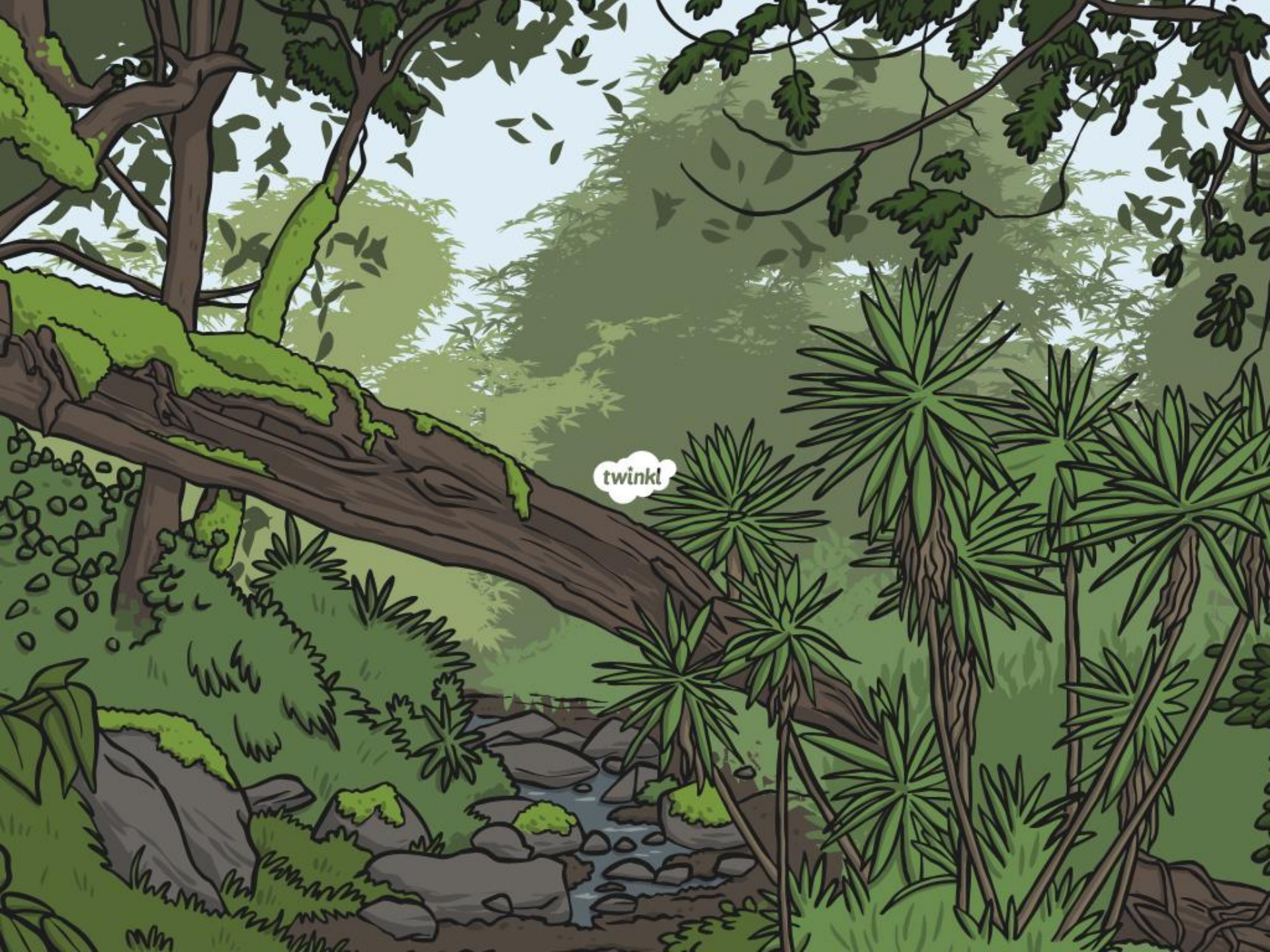
The cub is shorter than the adult tiger.

The adult tiger is taller than the cub.

Measuring Height and Width

Can you use the words below to talk about the animals in this picture?
tall, short, long, taller, shorter, longer, high, low, higher, lower





twinkl