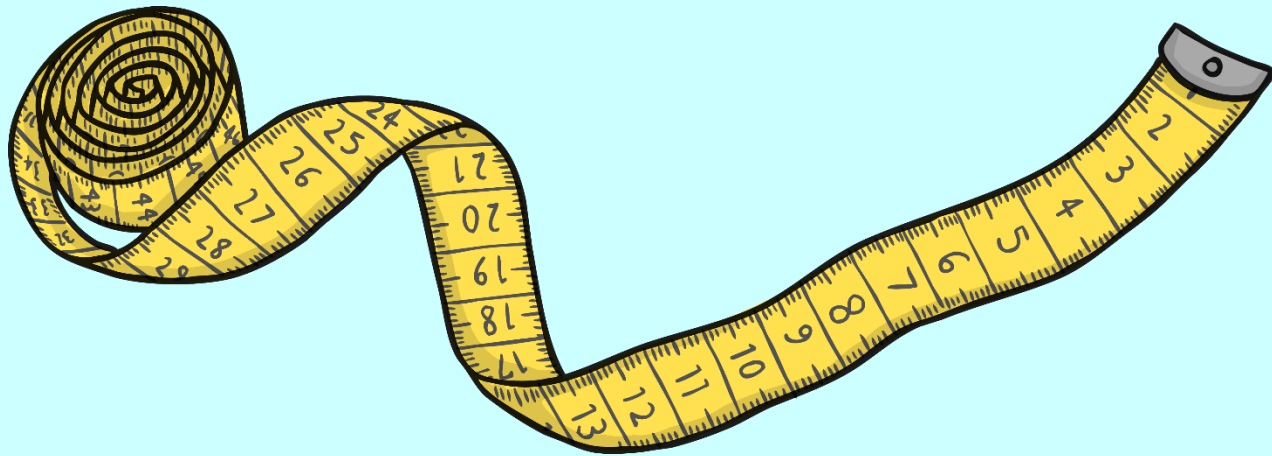


Measurement





LO: To measure using the appropriate units

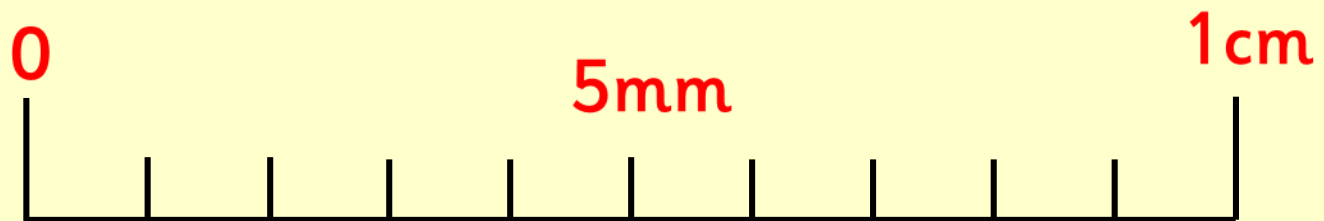
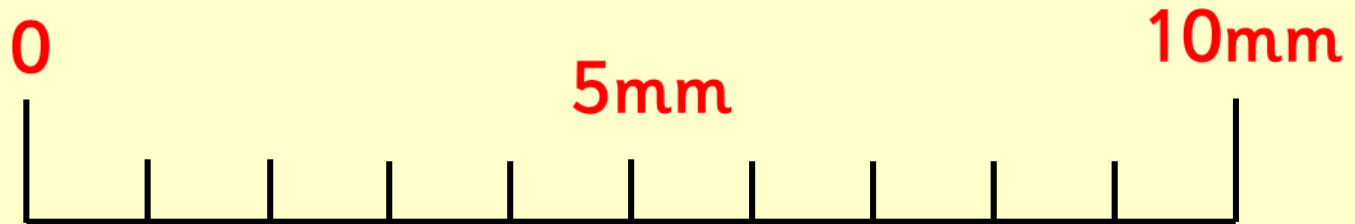
- Know how many mm to 1cm
- Know how many cm to 1 m
- Understand different units are appropriate for different sized measurements.
- Know to measure from 0



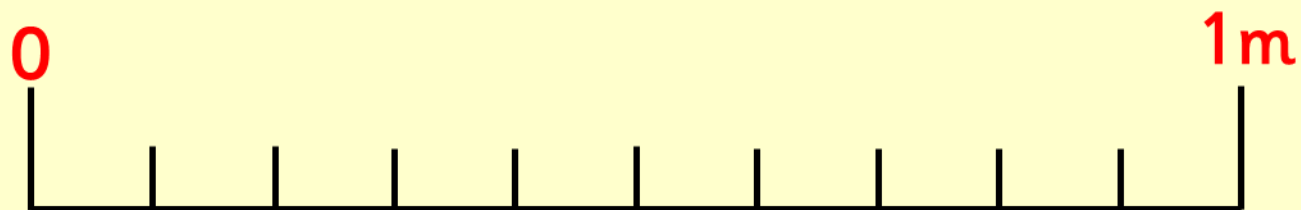
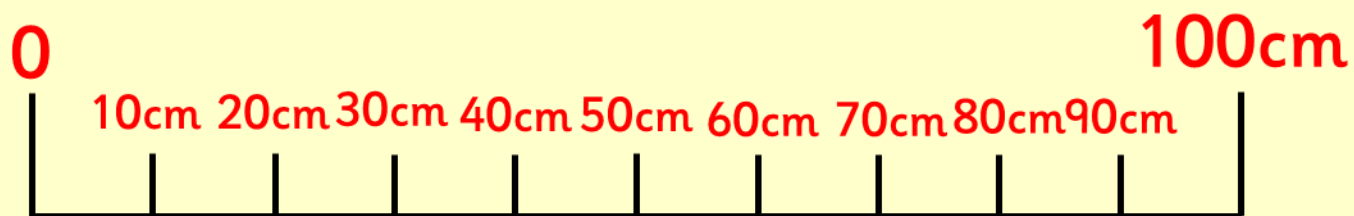
How many **millimetres (mm)** are there in **1 centimetre (cm)**?

How many **centimetres (cm)** are there in **1 metre (m)**?

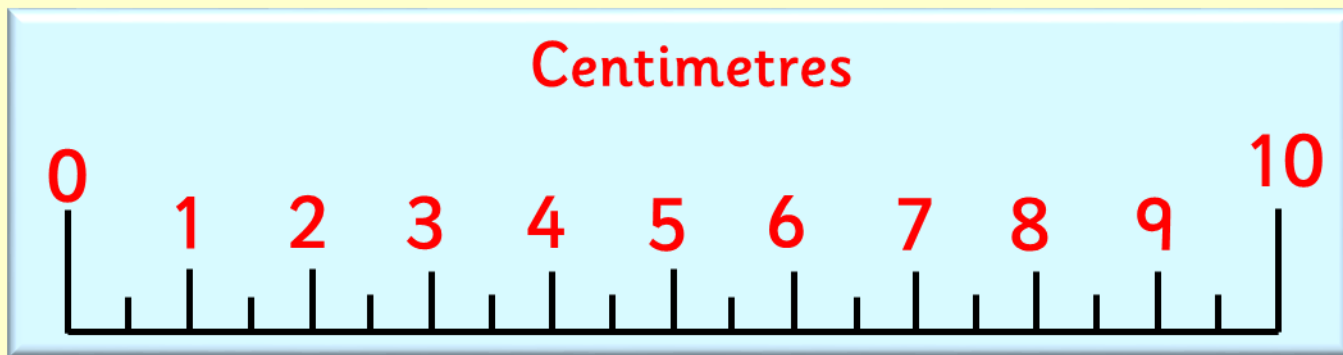
There are 10 millimetres (mm) in 1 centimetre (cm).



There are 100 centimetres (cm) to 1 metre (m)



Where is the correct part of a ruler to measure from?



Always start measuring from 0!

Why do you think it is important we know how to measure **length, width and height**?

What might you want to measure?

Bonus Question!



What is the missing number?

$$1\text{cm} = 10\text{ mm}$$

$$1\text{m} = 100\text{cm}$$

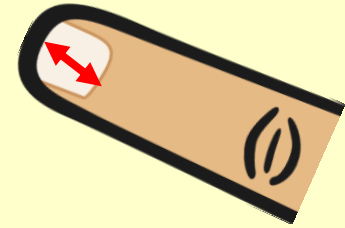
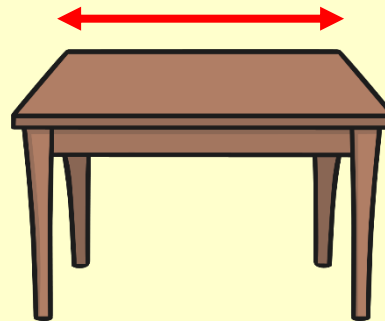
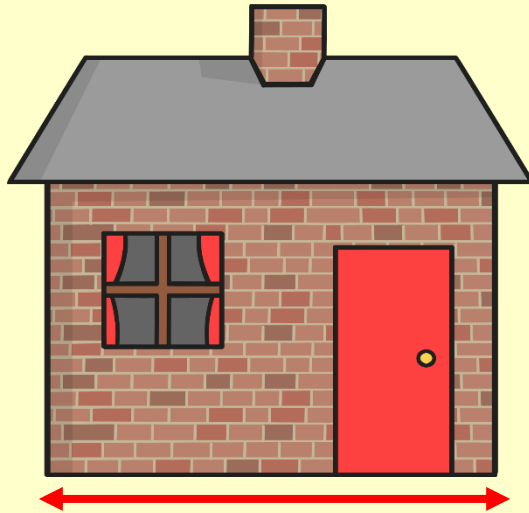
$$1\text{m} = ?\text{ mm}$$

Which unit would be the most appropriate to measure each of these?

metre (m)

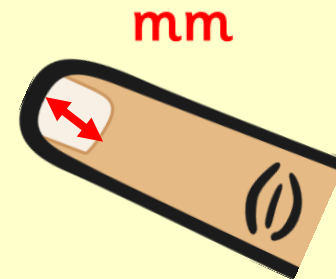
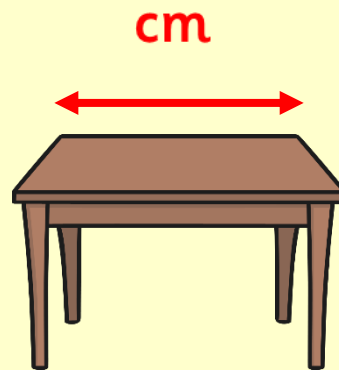
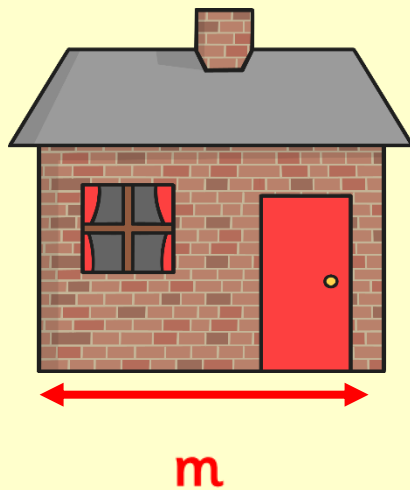
millimetre (mm)

centimetre (cm)



There is no wrong answer when it comes to measuring as long as the measurement is accurate, but there is always one measurement which is the most appropriate to use.

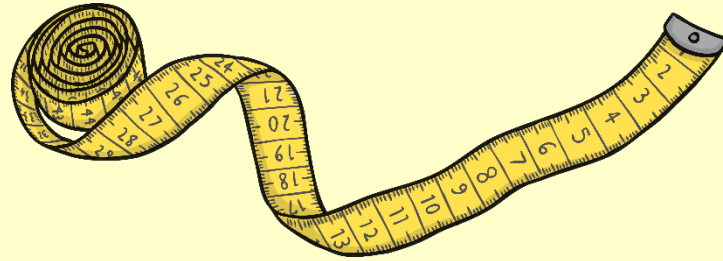
It is much easier to record the width of a house being **12m** rather than **1200cm** or **12000mm**, just like it is easier to measure your fingernails in **mm** rather than **m**.



What might you measure in **mm**?

What might you measure in **cm**?

What might you measure in **m**?



Sometimes when you are measuring, you might need to use 2 units to get an accurate measurement.

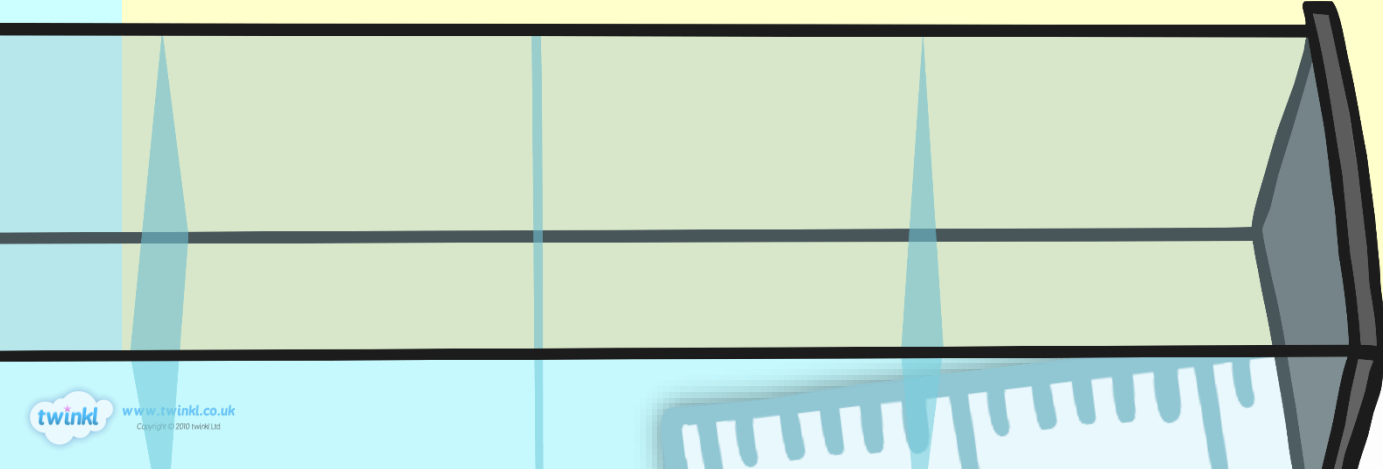
This happens when you can't measure to the next current unit.

If you ever measure using 2 units, always start with the **biggest first**.

This bookcase was being measured in **m**, since it is longer than 3m, we count the **cm** too.

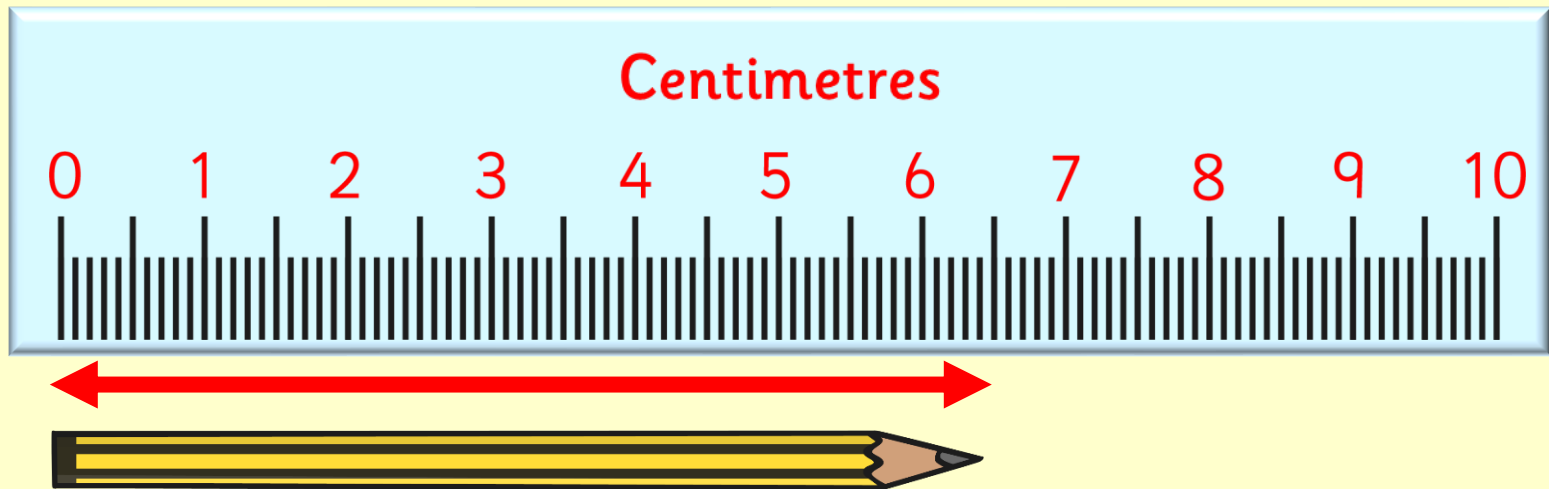
How long is this display case?

3m 10cm 20cm 30cm 40cm



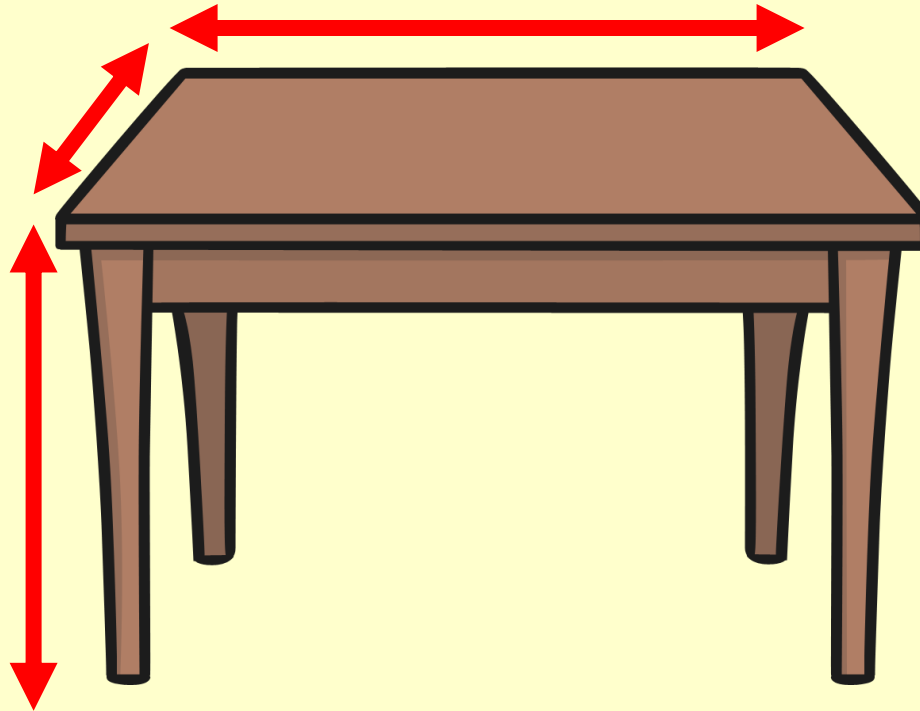
This pencil is being measured in centimetres, but it is between 6cm and 7cm, we need to use millimetres to get an accurate measurement.

Using cm and mm, how long is this pencil?



Task

Now measure the **width, height and length** of a table or desk in the most appropriate measurement units.



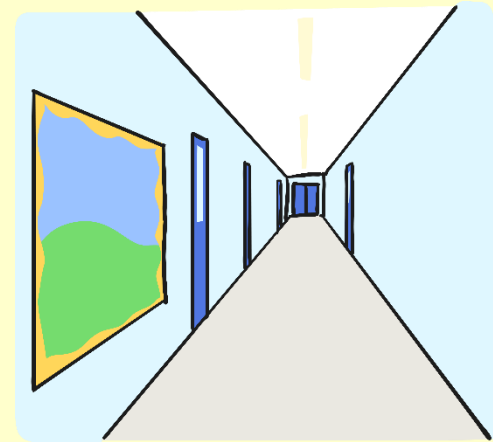
Plenary

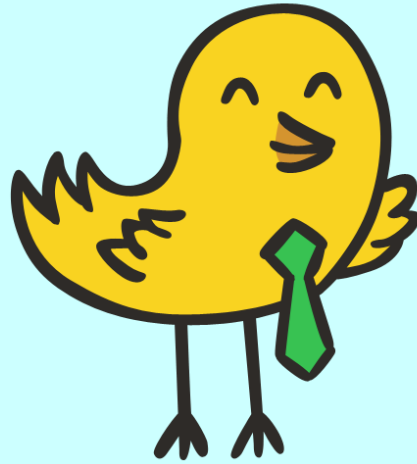
Which unit (mm, cm or m) would be most appropriate to measure each of these?

a) An insect

b) A book

c) A corridor





THE END